

# Moir Street Shared Path



You told us that you are here because of the beach, the bush, the active way of life, the informality and the slower pace. You value community; lots of volunteering, looking after our environment, looking after each other. You do not want to lose these things as Mangawhai grows. We have reflected this in the following six key moves.

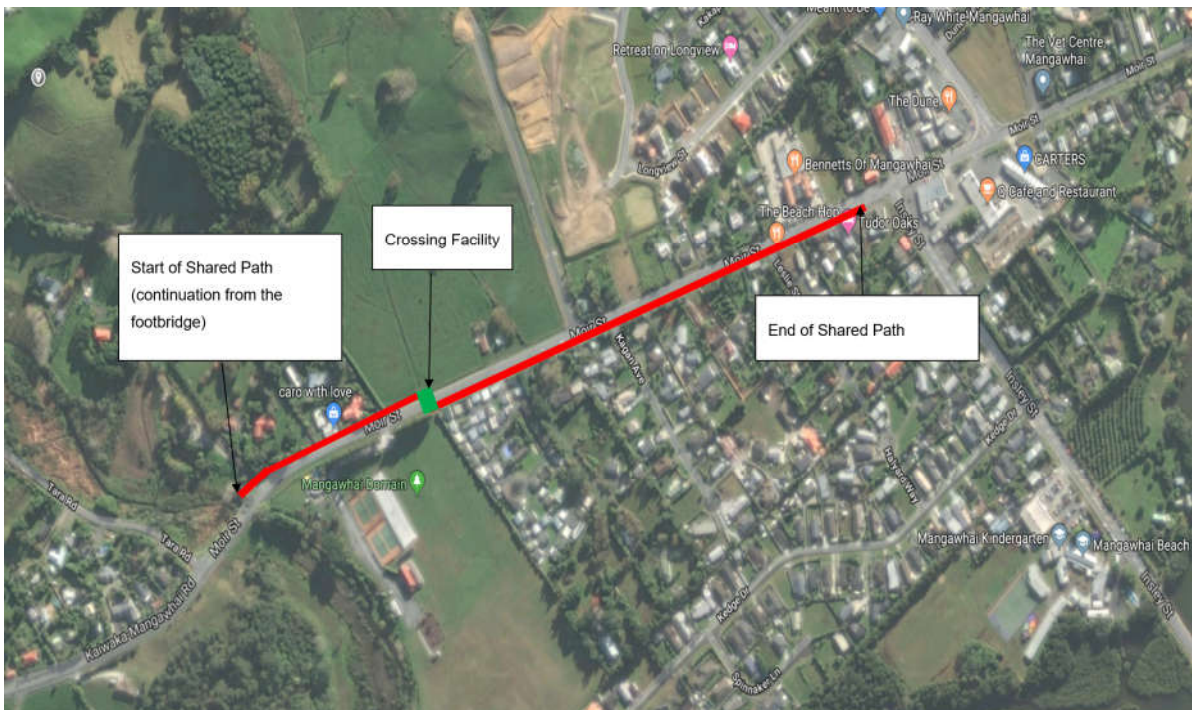


## Slow street from school to beach

The suggested approach to transport development is to fix “pain points” in the network (notably the two intersections at the Village Shops) but otherwise use cycling and walking to improve connectivity.

Once in Mangawhai, it is an active place with a safe and slow pace. A slow street will connect the different areas of Mangawhai from the school to the beach over time, invigorating town centres along the way.

## Moir Street shared path from Tara footbridge to Insley Street



Continuing from the shared path that was built on Tara Road, this 2.5 metre concrete path will connect Tara along Moir Street to the corner of Insley Street. There will be a crossing point at the domain to allow people to access community facilities located on both sides of this stretch of Moir Street.

**Works are scheduled to take place from the end of June to mid-August 2019.**



## Priority MCP Roding Projects

1. **Moir Street shared path from Tara to Insley**
2. **Connecting the Village to the Heads:**
  - a. Molesworth Drive shared path - Old Waipu Road to Mangawhai Central
  - b. Mangawhai Central to Moir Point Road.
3. **The Village:**
  - a. Insley Street – the school to the village shared path
  - b. The Village shopping area paths, parking and intersections
4. **Wood Street revitalisation.**

Additional stages are currently being worked through NZTA via a business case. The MCP project team will provide confirmed dates for the remaining stages once available.

## Supporting Documentation

Strategy / Plan	Description
<b>Mangawhai Community Plan</b>	<p>The Mangawhai Community Plan (MCP) is a community led and designed document to provide guidance to Kaipara District Council in the management of growth in Mangawhai. This plan is confined to the roles of Council, these being; planning and regulation, and investment in services and infrastructure for transport, water supply, storm water, wastewater, and parks and reserves.</p> <p>In mid-2016, Council set up a panel of community representatives to make recommendations for Mangawhai. Their recommendations were received and approved by Council in July 2017.</p> <p>The MCP was received by Council at its 20 January 2018 meeting.</p> <p>The MCP was adopted by Council at its 28 February 2018 meeting. Moved by Geange/Wethey, carried.</p> <p>Mangawhai Coastal Connections was identified as a priority one project to begin construction 2018/19.</p> <p>The Priority One projects identified have been provisioned for in the Kaipara District Council's Long Term Plan.</p>
<b>Long Term Plan</b>	<p>The Local Government Act 2002 (LGA) requires every council to produce a Long Term Plan (LTP) every three years. The LTP outlines our activities and priorities for the next 10 years, providing a long term focus for decision-making. It also explains how work will be scheduled and funded.</p> <p>Under the LGA, LTPs must be reviewed every three years with full consultation with the public each time. An Annual Plan is developed in the years in between.</p> <p>The Council held briefings across the district to discuss options and directions for setting the Long Term Plan 2018/2028. These meetings were open to the public.</p> <p>Council adopted the Long Term Plan 2018/2028 at their Council meeting held Tuesday 26 June 2018. Moved by Smith/Wethey, carried.</p> <p>Mangawhai Coastal Connections was identified as a planned improvement to Reserves and Open Spaces in Year One – 2018/19, Year Two – 2019/20 and Year Three 2020/21.</p>

Any queries or feedback can be directed to [mangawhaicommunityplan@kaipara.govt.nz](mailto:mangawhaicommunityplan@kaipara.govt.nz)  
 For more information please visit our website [www.mangawhaicommunityplan.co.nz](http://www.mangawhaicommunityplan.co.nz)